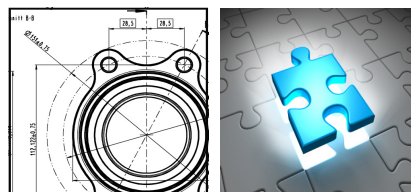


CAD, GIS & Drafting Services



Services

- CAD, GIS & Drafting
- GIS Business Case Development
- GIS Project Management & Delivery
- Asset Management
- As-built Data Capture

Major Projects Consulcad has work on

- Fiona Stanley Hospital
- VicTrack Fibre Optic Network
- BHP Billiton Olympic Dam Expansion
- Austin & Mercy Hospital Redevelopment
- Port Waratah Coal Facility
- Crown Casino

CAD, GIS & Drafting Clients

- VicTrack
- Dept of Transport
- CB Richard Ellis
- Moreland City Council
- City of Greater Geelong
- Victoria University
- Mainco
- Emergency Communications Victoria

We have worked in the Drafting & GIS fields since the late 1980s and have seen the industry transition from new and raw technology to sophisticated processing and analysis.

Consulcad can provide Drafting, GIS and data management services ranging from strategic advice to outsourced GIS, Asset Management and as-built data capture.

We are able to provide a range of services, from basic drafting to compliance audits and site surveys. In addition we can provide the technology to store, distribute and manage electronic or hard copy documents.

Consulcad assists organisations involved in the management of drawings. We help companies access, distribute and maintain information and drawings, including compliance with standards such as The Victorian Rail Industry Operators Group (VRIOGS)

Consulcad are members of a range of Government Panels including:

Department of Treasury & Finance, Victoria

- Whole of Government eServices Panel
- Gateway Review Panel

Department of Treasury & Finance, Tasmania

Approved Consultant for Building Construction & Maintenance Services

Department of Transport, Energy & Infrastructure, SA

eProjects Panel

Department of Finance & Deregulation, Canberra

- ICT Management Consultant
- Gateway Review Panel



Industry

- Commercial Real Estate

Challenge

- Establish national GIS
- Data capture of industrial properties & buildings
- Secure presentation of industrial properties to distributed users

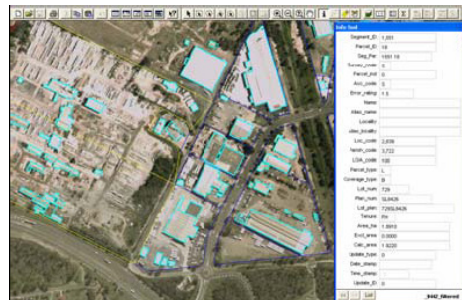
Benefits

- Improved product knowledge
- Competitive edge through improved data access
- Expanded knowledge centre across the business
- Holding valuable local knowledge supports CBRE company vision

INDUSTRIAL PROPERTY MANAGEMENT

CB Richard Ellis is one of the world's leading integrated real estate services company with more than 250 offices in 48 countries worldwide.

The research department from CB Richard Ellis engaged Consulcad to design a knowledge centre to assist in the identification and management of Industrial Properties. Consulcad project managed all phases of the project.



The project involved using GIS tools to combine Property and Town Planning data with aerial photography, to build an inventory of industrial land and buildings. This was completed in-house by specialist cartographers and GIS operators.

The information required to complete this project was complex and often difficult to acquire. With an expert understanding of GIS information, Consulcad sourced the information from various custodians, including State government, local government and private companies.

Due to our knowledge and understanding of the data and the custodians, we were able to negotiate agreements with individual providers, which resulted in significant savings to CB Richard Ellis.

The project received the 'Presidents choice award' at the Australian Property Institute 'Excellence in Property Awards' - the project has been extended to cover Sydney, Brisbane, Adelaide & Perth.



Industry

- Rail Infrastructure

Challenge

- Large backlog of drawing maintenance
- To gather relevant data from numerous sources
- Inconsistent drawing file formats

Benefits

- Delivered accurate picture of VicTrack assets
- Improved asset management
- Easy storage & retrieval of drawings from the DMS

ENGINEERING DRAWING UPGRADE

VicTrack is one of the largest land owners in Victoria and owns all land and infrastructure used for the purposes of public train and tram transport.

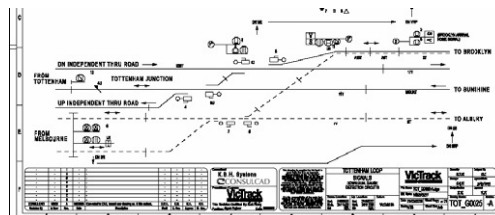
VicTrack engaged Consulcad to carry out a series of Signal and Cable Drawing Upgrade Projects. Drawings are upgraded based on priorities defined by Stakeholders.

The project involved:

- Liaising with VicTrack and rail stakeholders to prioritise sites for upgrade.
- Ensuring compliance with The Victorian Rail Industry Operators Group (VRIOGS) standards.
- Gather available hardcopy and electronic information, sources include site maintenance manuals, VicTrack Document Management System (DMS), RailMap, PCR and DOI PASS.
- Complete drawing upgrade and site survey to certify drawing 'As In Service'
- Upload information to DMS with a link to the PASS System.

These projects had a twofold objective;

- To update drawings to "As In Service" (AIS) - complying with newly developed CAD standards and
- To be uploaded to the VicTrack Drawing Management System (DMS).



CAD, GIS & Drafting Services Case Study



Industry

- Local Government

Challenge

- Diverse data inherited from 5 former municipalities
- Staging & budgeting
- Limited in-house resources
- Quality assurance

Benefits

- Staged, cost effective data capture
- Improved valuation & asset management
- Realistic valuation and infrastructure management
- Immediate benefits

ASSET MANAGEMENT & GIS

Consulcad was engaged by the City of Greater Geelong Council to review their asset GIS / asset management projects, we provided project management and QA services, the GIS / Asset Management project was completed in various stages over a 3 year period.

A vital early deliverable in Stage 1 of the project was the Geo Referencing of over 20,000 engineering drawings, which allowed CoGG to make this information available to staff and was an early win for the GIS.

The next project stage was to budget & design an effective solution for capturing detail drainage information required by engineers and asset managers. A major focus was to deliver on both operational and valuation requirements.

To achieve these goals Consulcad developed a tender process for data capture and provided project management and QA of the successful contractor.

The result was a complete picture of the drainage system which is used to enhanced town planning, emergency management & maintenance.

A major benefit of this approach was the ability to control timeframes and budgets ensuring benefits were realised early and costs were understood and managed