

Industrial Property Management



Industry

- Commercial Real-estate

Company Facts

- World Leader in integrated real estate services operating in 48 countries
- Vision to deliver solution through local knowledge worldwide.

Challenge

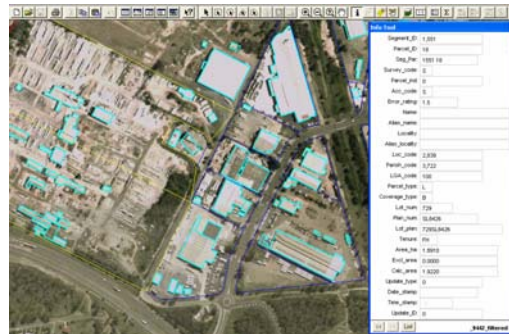
- Establish National GIS
- Data capture of industrial properties and buildings.
- Secure presentation of industrial properties and buildings to distributed users

Return on investment

- Increased product knowledge
- Competitive edge through improved data access.
- Australian First

Future Benefits

- Holding valuable local knowledge supports CBRE company vision.
- Expand knowledge centre across the business



CB Richard Ellis is the world's leading integrated real estate services company with more than 250 offices in 48 countries worldwide. CB Richard Ellis delivers strategic advice specialising in Commercial and Industrial Sales and Leasing, Investment Sales, Asset Services and Facilities Management, Hotels & Leisure, Corporate Services, Financial Services, Valuation & Advisory Services and Global Research & Consulting.

The research department from CB Richard Ellis engaged Consulcad to design a knowledge centre to assist in the identification and management of Industrial Properties. Consulcad project managed all phases of the project.

The project involved using GIS tools to combine Property and Town Planning data with aerial photography, to build an inventory of industrial land and buildings. This was completed in-house by specialist cartographers and GIS operators.

The information required to complete this project was complex and often difficult to acquire. With an expert understanding of GIS information, Consulcad sourced the information from various custodians, including State government, local government and private companies.

Due to our knowledge and understanding of the data and the custodians, we were able to negotiate agreements with individual providers, which resulted in significant savings to CB Richard Ellis.

Following the success of the Melbourne project, which received the 2001 Presidents choice award at the Australian Property Institute's Excellence in Property Awards, similar projects have been delivered for Sydney and Brisbane.

<http://www.cbre.com.au/>